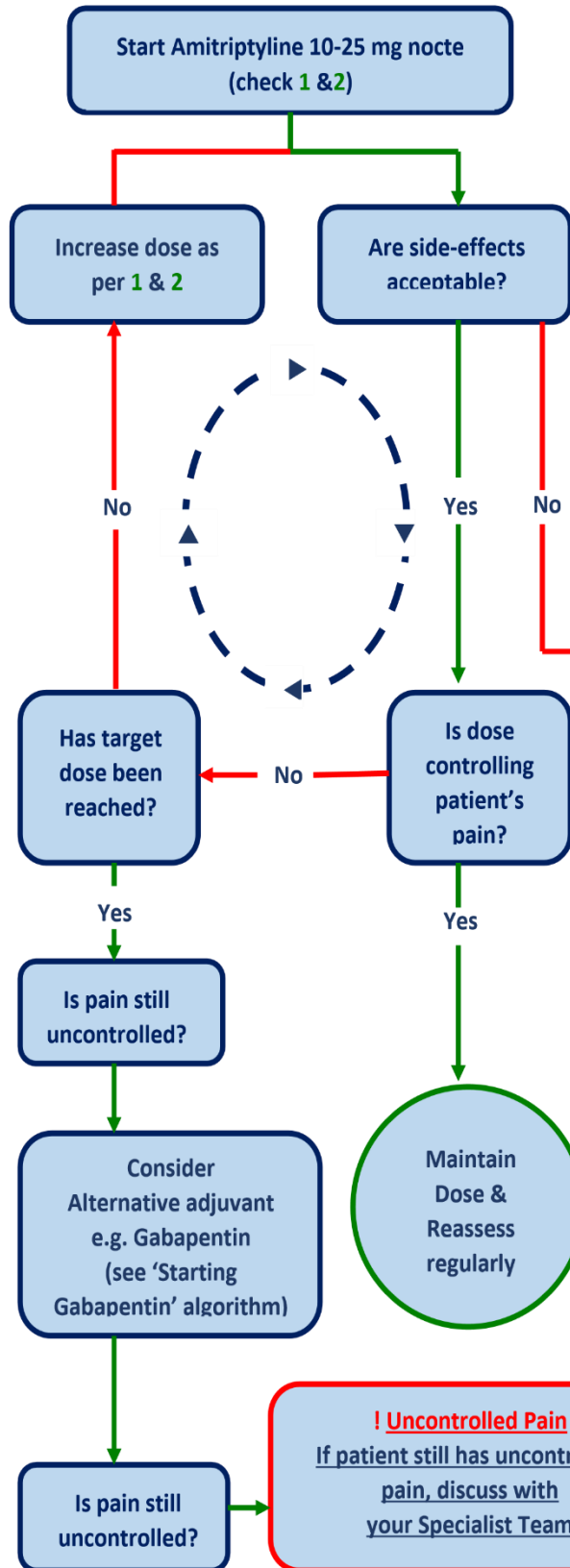


Edinburgh Pain Assessment Tool EPAT®

Starting Amitriptyline*

▶ Red for No! ▶ Green for Go!



¹For younger patients and inpatients:

- Start 25 mg nocte
- Increase to 50 mg nocte at day 3
- Increase to 75 mg nocte at week 2
- ! Remember to balance against side-effects

²For frail/elderly/infirm and outpatients:

- Start 10 mg nocte
- Increase to 25 mg at day 3
- Increase to 50 mg at week 2
- Increase to 75 mg at week 3-4 (as tolerated)
- ! Seek advice if Amitriptyline is not effective or side-effects prevent dose increases

! Drug Interaction: Avoid using amitriptyline in patients taking SSRI's

Amitriptyline Side Effects:
Sleepiness/ dizziness/Delirium/ Dry Mouth/ Blurred Vision/ Constipation in the elderly

If side-effects are intolerable:

- Exclude other causes for these symptoms - they may not be due to Amitriptyline
- Reduce to the last tolerated dose* and/or stop the amitriptyline
- Consider discussing with your Specialist Team
- *Consider a more gradual dose increase e.g. 10 mg increments

Maintenance:

- Maintain dose when analgesic benefit achieved
- Continue to monitor patient tolerance
- Avoid abrupt withdrawal after prolonged use

*If in doubt check BNF for drug interactions/contraindications