

## Equipment

Nerve block needle - 22G 50mm

20ml syringe x 2; 2ml syringe x 1

Drawing up needles; orange needle

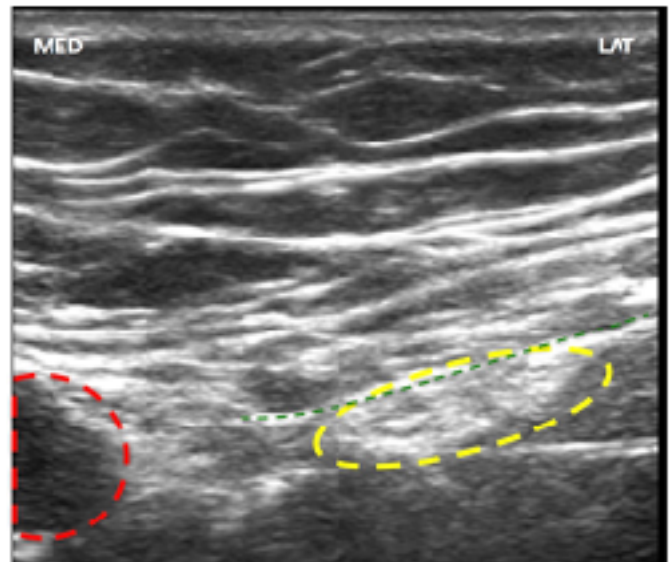
0.5% Chlorhexidine spray

Dressing pack

Ultrasound probe cover and gel

0.25% levobupivacaine; 1% lidocaine

Weight	Dose
< 50 kg	30 ml of 2.5mg/ml Levobupivacaine
> 50 kg	40 ml of 2.5mg/ml Levobupivacaine



## Contraindications

Patient refusal

Allergy to local anaesthetic

Infection at injection site

Warfarin with INR  $\geq$  1.5  
DOACs  
LMWH (<12hr from prophylactic or <24hr from therapeutic dose)

## Complications

Local anaesthetic toxicity

Intravascular injection

Temporary/permanent nerve damage

Allergy

Infection

Block failure

# Procedure

**Ensure no contraindications**

**Obtain verbal consent**

**Document pain score**

**Attach monitoring - NIBP, ECG, oxygen saturation probe**

**Establish IV access**

**Prepare equipment**

**Prepare & clean skin**

**Identify landmarks on ultrasound**

**STOP before you block - Confirm correct side**

**Skin infiltration with 1% Lidocaine**

**Introduce nerve block needle at lateral aspect of probe**

**Visualise needle tip advancing towards fascia iliaca**

**Stop advancing if unable to visualise tip and reposition**

**Aspirate and if negative, inject 3 ml Levobupivacaine**

**Observe spread of LA towards femoral nerve**

**Aspirate every 5 ml and inject total volume Levobupivacaine**

**Document observations at 5, 10, 15 & 30 mins post procedure in ED**

**Document block in notes - site, side, dose & time**

**Observe patient for signs of opiate related apnoea & LA toxicity**

**Ensure patient remains in ED for at least 30 mins post FIB**

**Record pain score prior to leaving ED**