

## VALPROATE PRESCRIBING within MENTAL HEALTH & LEARNING DISABILITY SERVICES

### PROCESS for INITIATION of NEW PATIENTS & REVIEW PROCESS for EXISTING FEMALE PATIENTS



<b>TARGET AUDIENCE</b>	Prescribers within NHS Lanarkshire MHL D services
<b>PATIENT GROUP</b>	All new patients under the age of 55 where valproate is being considered and existing female patients under the age of 55 prescribed valproate

## Summary

- Regulatory changes have been announced by the MHRA to reduce the harms from valproate, including the significant risk of harm to the baby if taken during pregnancy and the risk of impaired fertility in males.
- This document outlines the local processes for managing the prescribing of valproate:
  - to all new patients under the age of 55
  - to existing female patients under the age of 55
  - for obtaining a local second opinion
  - for managing review of patients who do not attend/ are difficult to engage

Contents	
Background and recent updates	2
Valproate prescribing in females; Valproate risk acknowledgement forms	3
Flowchart 1- Process for any new female patients less than 55 years of age starting on valproate	4
Flowchart 2-Process for any new male patients less than 55 years of age starting on valproate	5
Flowchart 3 -Review process for existing female patients less than 55 years of age already prescribed valproate	6
Flowchart 4 - Process for obtaining second opinions in NHS Lanarkshire's MHL D service	7
Further information for accessing a second opinion within NHS Lanarkshire's MHL D service	8
Managing review of patients who do not attend/ are difficult to engage	9
References	9
Governance information	10

**Background and recent updates**

From January 2024, the MHRA has introduced new restrictions on the prescribing of sodium valproate to ensure that:

- valproate is only used if other treatments are ineffective or not tolerated.
- any use of valproate in females of child-bearing potential who cannot be treated with other medicines is in accordance with a pregnancy prevention programme.
- these measures aim to reduce the initiation of valproate to only patients for whom no other therapeutic options are suitable.

**The regulatory changes are;**

**A. Valproate must not be started in new patients (male or female) younger than 55 years**, unless two specialists independently consider and document that there is no other effective or tolerated treatment, or there are compelling reasons that the reproductive risks do not apply.

**B. At their next annual specialist review, female patients of childbearing potential should be reviewed using a revised Valproate Risk Acknowledgement Form**, which will include the need for a second specialist signature if the patient is to continue with Valproate and subsequent annual reviews with one specialist unless the patient’s situation changes.

[Valproate new safety materials to support regulatory measures in men & women under 55](#)

[valproate.psychiatry@lanarkshire.scot.nhs.uk](mailto:valproate.psychiatry@lanarkshire.scot.nhs.uk)

<b>Lead Author</b>	Lorna Templeton	<b>Date approved</b>	Apr 2024
<b>Version</b>	V3	<b>Review Date</b>	Apr 2027

## Valproate Prescribing within MHL D services

### Valproate prescribing in females

Prescribing valproate to a female of child-bearing potential without fulfilling the conditions of the pregnancy prevention programme is contraindicated and represents an unlicensed use of the drug.

The responsibility for initial completion of the risk acknowledgement form and for ongoing annual review lies with the specialist prescriber, therefore female patients of child-bearing potential on valproate must remain on psychiatrist caseloads.

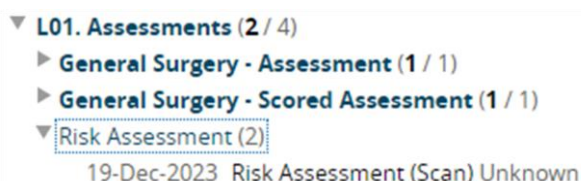
A pregnancy prevention programme (consisting of the use effective contraception without interruption) must be in place **BEFORE** valproate is commenced in female patients of child-bearing potential.

At least one effective method of contraception, **preferably a highly effective user-independent form** such as an intra-uterine device, implant, female/ male sterilisation or 2 complementary forms of contraception including a barrier method should be used.

Sexual health services required a complete list of all currently prescribed medications included with referrals for contraceptive review due to potential interaction with enzyme-inducing medications.

### Valproate risk acknowledgment forms

- All background information and risk materials including patient information, healthcare professional information, risk acknowledgement forms (separate forms for males and females) and any updates from the MHRA can be found here; [Valproate new safety materials to support regulatory measures in men and women under 55 years](#)
- The MHRA have recently confirmed that 'wet signatures' are not mandatory on the risk acknowledgement form as long as the contribution of the patient is noted, verbal consent is obtained and the patient receives written information and a copy of the risk acknowledgement form.
- On submission of completed risk acknowledgement form to the generic email address [valproate.psychiatry@lanarkshire.scot.nhs.uk](mailto:valproate.psychiatry@lanarkshire.scot.nhs.uk), the form will be uploaded to primary care system- *Docman* and to clinical portal, under 'assessments'; 'risk assessments'

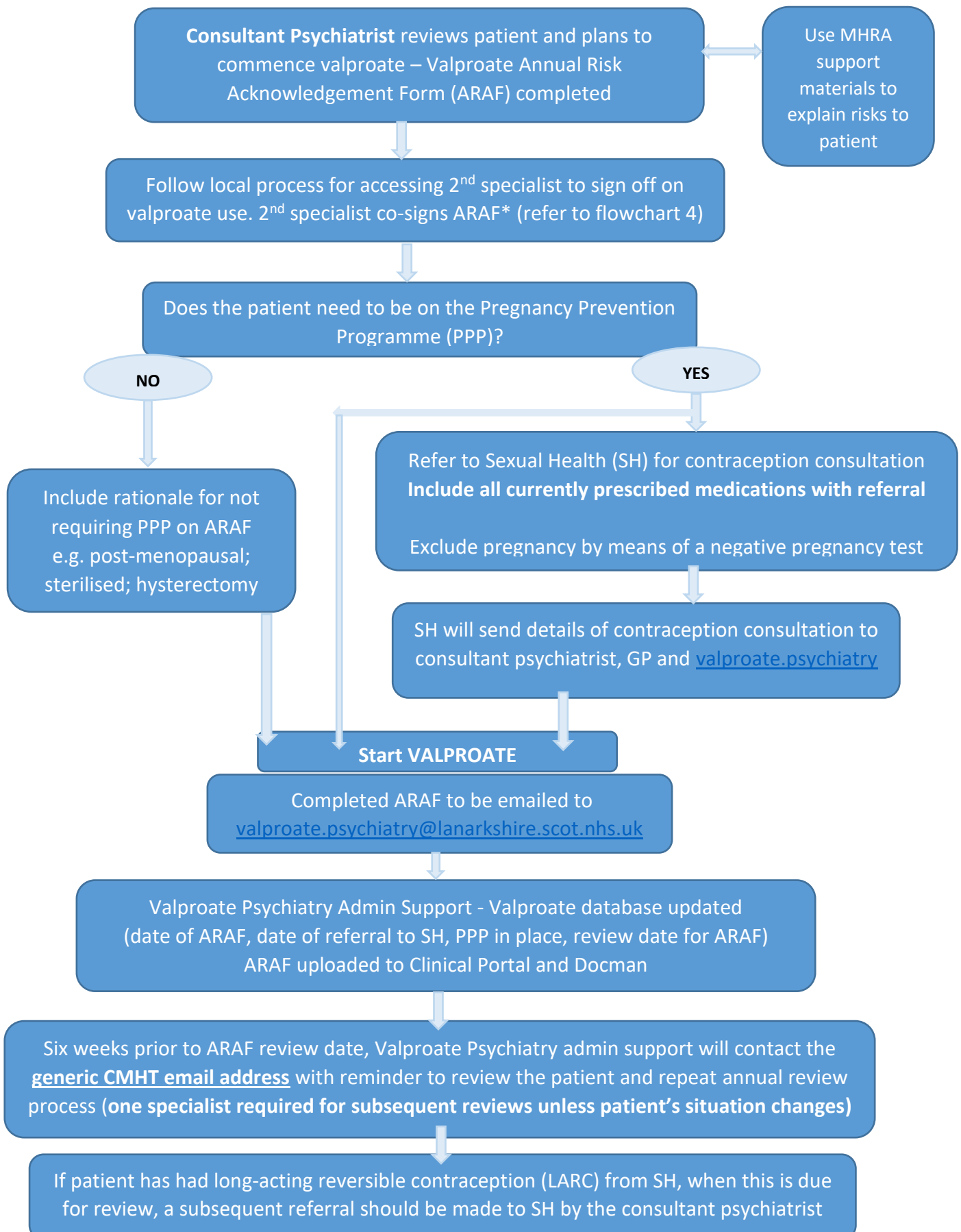


- The national advice regarding valproate is subject to ongoing review, with potential further changes to processes in the future.

Lead Author	Lorna Templeton	Date approved	Apr 2024
Version	V3	Review Date	Apr 2027

## Valproate Prescribing within MHL D services

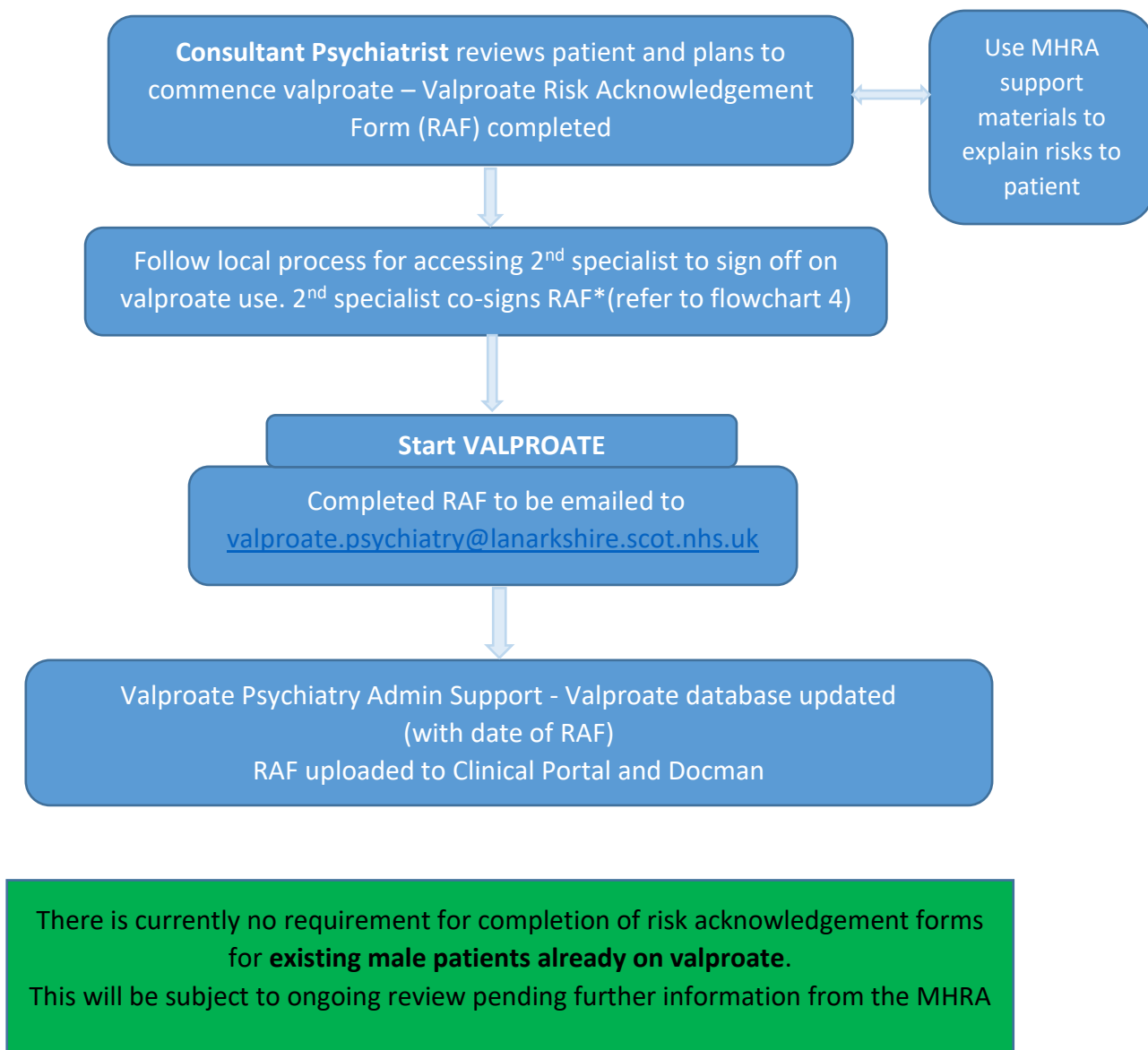
**Flowchart 1: Process for any new female patients less than 55 years of age starting on valproate**



Lead Author	Lorna Templeton	Date approved	Apr 2024
Version	V3	Review Date	Apr 2027

## Valproate Prescribing within MHL D services

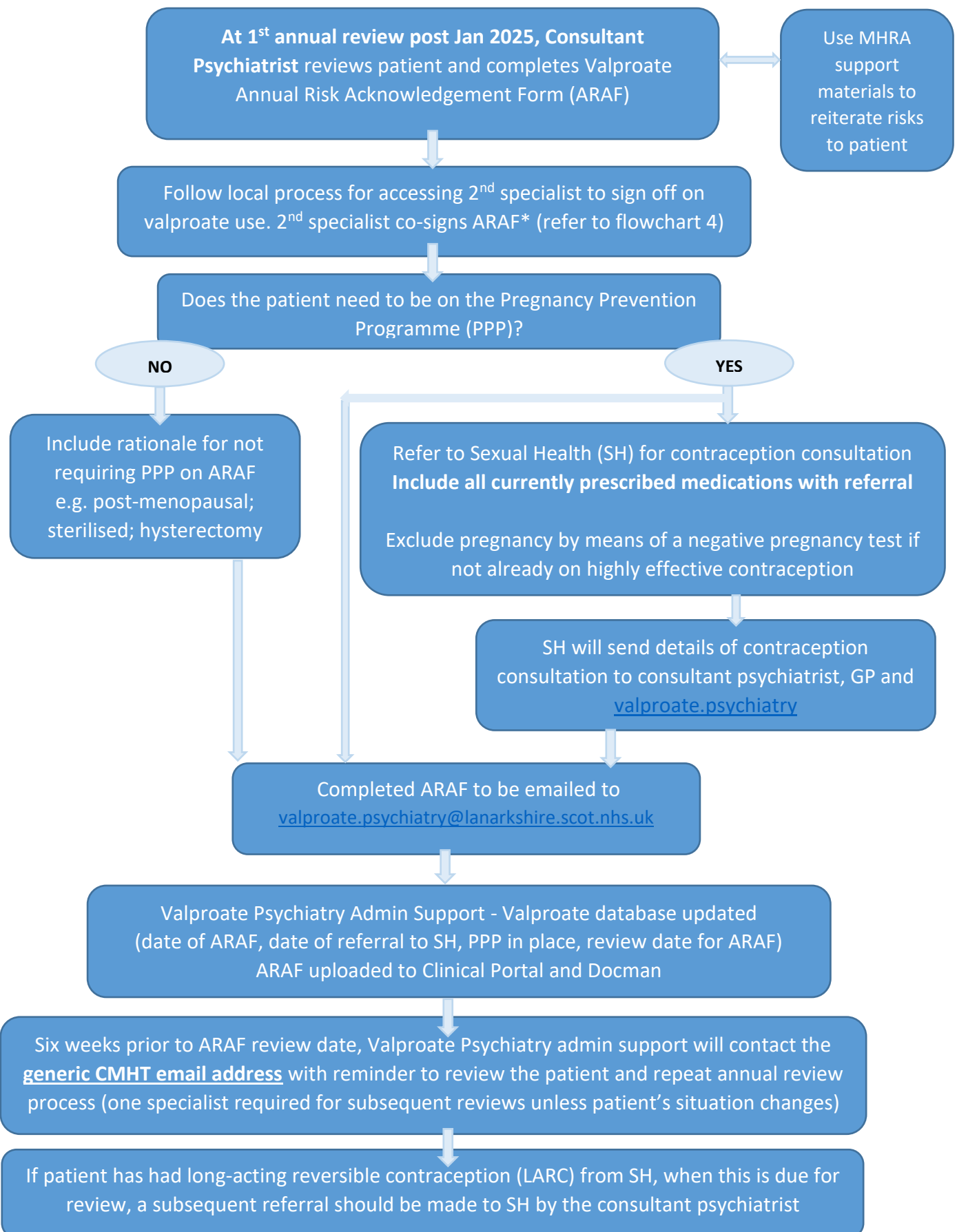
**Flowchart 2: Process for any new male patients less than 55 years of age starting on valproate**



Lead Author	Lorna Templeton	Date approved	Apr 2024
Version	V3	Review Date	Apr 2027

## Valproate Prescribing within MHL D services

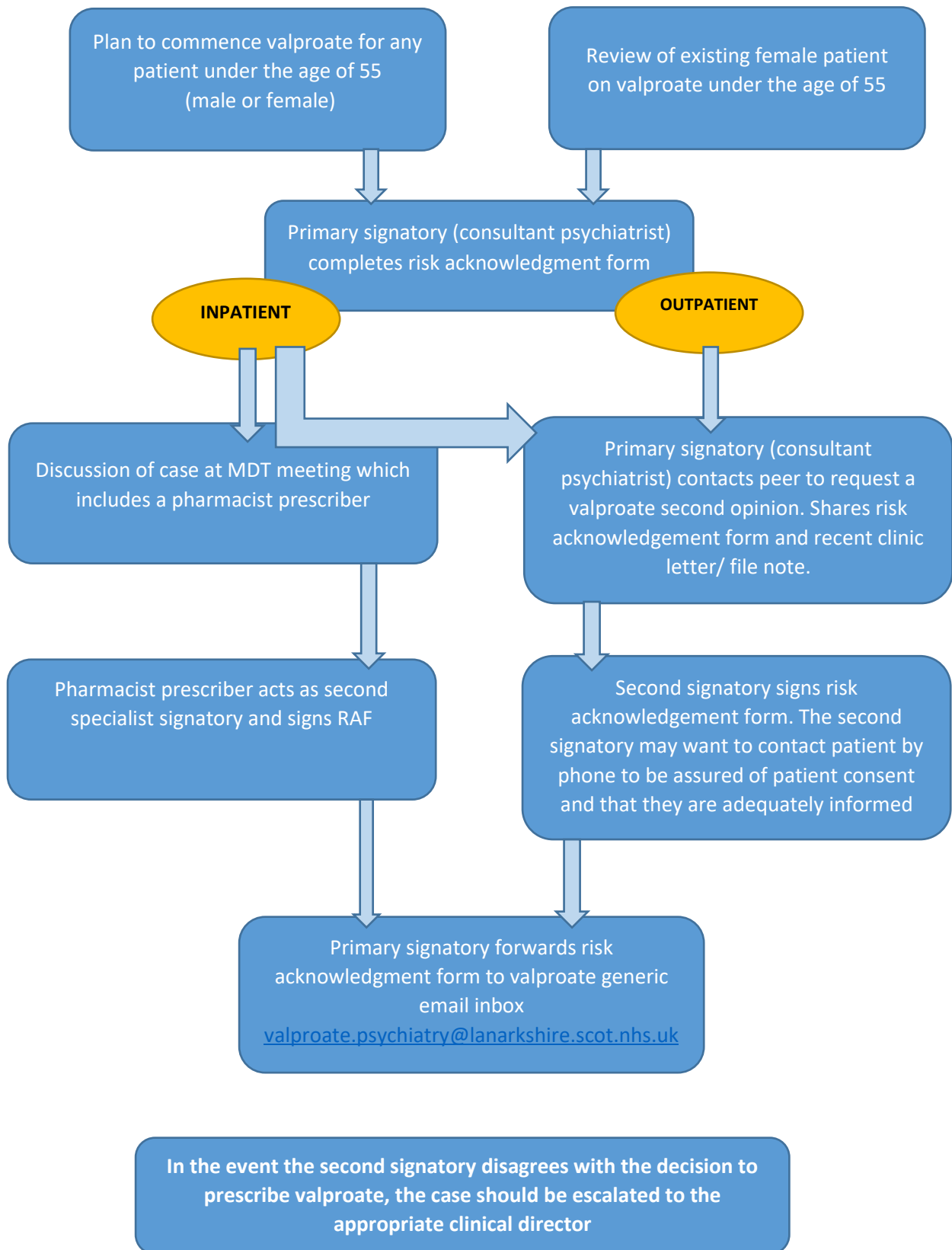
**Flowchart 3: Review process for existing female patients less than 55 years of age already prescribed valproate**



Lead Author	Lorna Templeton	Date approved	Apr 2024
Version	V3	Review Date	Apr 2027

## Valproate Prescribing within MHL D services

**Flowchart 4: Process for obtaining second opinions**



Lead Author	Lorna Templeton	Date approved	Apr 2024
Version	V3	Review Date	Apr 2027

### Further information on accessing second opinions within NHS Lanarkshire's MHL D service

1. The responsibility for obtaining a second opinion lies with the patient's named consultant psychiatrist (the primary signatory of the risk acknowledgement form).
2. The primary signatory (consultant psychiatrist) must request a second opinion from another specialist prescriber.
3. The second opinion can be obtained from another consultant psychiatrist within the CMHT/ subspecialty or from a colleague from another locality who is not directly being supervised by the treating doctor. Consider peer group colleagues and/or informal peer or 'buddy' system.
4. Within NHS Lanarkshire MHL D services, a specialist prescriber may also include; mental health speciality doctors, mental health specialist nurses prescribers, mental health pharmacist prescriber (where the pharmacist is a named member of the MDT)
5. Discussion of cases at multidisciplinary team (MDT) meetings can substitute for the second signature, through a named representation of the MDT who should be a specialist prescriber.
6. The second signatory for initiation of valproate treatment and the decision to continue or switch valproate treatment should not be in direct line management of the primary signatory.
7. There is no expectation that the second signatory reviews the patient in person, however, they must have full access to all medical records and test results to be able to independently consider and document that there is no other effective or tolerated treatment.
8. The second signatory may want to contact the patient independently to ensure that they are adequately informed of risks and are consenting to treatment.
9. In the event the second signatory disagrees with the decision to prescribe valproate, the case should be escalated to the appropriate clinical director for further discussion.

10. From Mental Welfare Commission's December 2023 newsletter to Designated Medical Practitioners (DMPs)

#### **MHRA VALPROATE REQUIREMENTS**

*If a Responsible Medical Officer (RMO) plans to use Valproate for those under 55 years old, the RMO will need to ask for a local second opinion. **DMPs are not to be used as the second "independent specialist"**. If the local second opinion doctor agrees with the RMO's decision, then the RMO may ask for a DMP assessment (where applicable). When a DMP has the discussion with the RMO about the treatment plan, please ask the RMO if the MHRA requirements have been met. If the DMP chooses to authorise Valproate, then to please state on the T3B as a condition that **the MHRA requirements need to be met.***

Lead Author	Lorna Templeton	Date approved	Apr 2024
Version	V3	Review Date	Apr 2027



**Managing review of patients who do not attend/ are difficult to engage**

This is currently only relevant to female patients who are expected to have an annual review (includes existing patients and new female patients at subsequent annual reviews) as male patients under the age of 55 years of age should have risk acknowledgement forms completed (including second specialist signature) prior to commencing on valproate treatment and currently only require the risk acknowledgment form at the point of initiation.

For existing female patients and new female patients at subsequent annual reviews who are invited for an annual specialist review of valproate therapy in line with regulatory advice and who fail to attend, this should be managed in line with local standard non-attendance policy.

The patient and their GP should be written to advising that they will be discharged from the service if they fail to engage and explain that the clinical implications of this will mean that mental health services will no longer be able to recommend to their GP that valproate continues. If the patient wishes to continue on valproate, they must engage with the specialist review.

Reasonable attempts should be made to contact the patient taking into consideration information held within the CMHT about the patient’s preferred method of communication and processes known to support their engagement.

**References/Evidence**

1. Valproate: new safety and educational materials to support regulatory measures in men and women under 55 years of age. Jan24 <https://www.gov.uk/drug-safety-update/valproate-belvo-convulex-depakote-dyzantil-epilim-epilim-chrono-or-chronosphere-episenta-epival-and-syonellv-new-safety-and-educational-materials-to-support-regulatory-measures-in-men-and-women-under-55-years-of-age>
2. Valproate: organisations to prepare for new regulatory measures for oversight of prescribing to new patients and existing female patients. National Patient Safety Alert. MHRA Nov23 <https://www.cas.mhra.gov.uk/ViewandAcknowledgment/ViewAlert.aspx?AlertID=103240>
3. Valproate: review of safety data and expert advice on management of risks. Public Assessment Report MHRA Nov23 <https://assets.publishing.service.gov.uk/media/65660310312f400013e5d508/Valproate-report-review-and-expert-advice.pdf>
4. Did Not Attend and No Access Visits Policy. NHS Lanarkshire Mental Health & Learning Disability Services. Jul 22 (under review - Apr 24)

<b>Lead Author</b>	Lorna Templeton	<b>Date approved</b>	Apr 2024
<b>Version</b>	V3	<b>Review Date</b>	Apr 2027

## Valproate Prescribing within MHL D services

### Appendices

#### 1. Governance information for Guidance document

<b>Lead Author(s):</b>	Lorna Templeton
<b>Endorsing Body:</b>	ADTC
<b>Version Number:</b>	V3
<b>Approval date</b>	17 <sup>th</sup> Apr 2024
<b>Review Date:</b>	Apr 2027
<b>Responsible Person (if different from lead author)</b>	

CONSULTATION AND DISTRIBUTION RECORD	
<b>Contributing Author/ Authors</b>	Lorna Templeton
<b>Consultation Process / Stakeholders:</b>	Consultant Psychiatrists; MHL D D&T; MHL D CG
<b>Distribution</b>	All prescribers in MHL D services MHL D service managers for dissemination to ward and community mental health teams.

CHANGE RECORD		
Lead Author	Change	Version No.
S Leggate L Templeton	<i>New document to support local processes for management of women of child-bearing potential prescribed valproate</i>	1
L Templeton	<i>Updates from sexual health; definition of highly effective contraception; clarification regarding 'wet signatures' on RAFs</i>	2
L Templeton	<i>Significant update following regulatory changes from MHRA, including outlining processes for; new female patients less than 55 years of age starting on valproate; new male patients less than 55 years of age starting on valproate; existing female patients less than 55 years of age already prescribed valproate; obtaining second opinions; managing review of patients who do not attend/ are difficult to engage</i>	3

<b>Lead Author</b>	Lorna Templeton	<b>Date approved</b>	Apr 2024
<b>Version</b>	V3	<b>Review Date</b>	Apr 2027